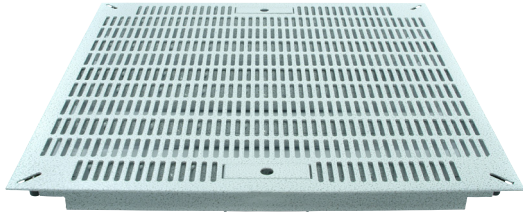


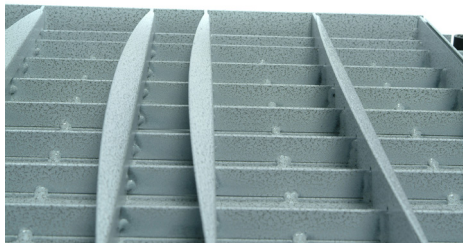
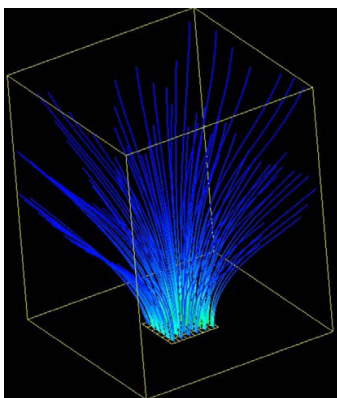
Managed Airflow Grille



Standard flat bottom floor grilles have a major design flaw that leads to jet stream, short cycling and negative airflow.

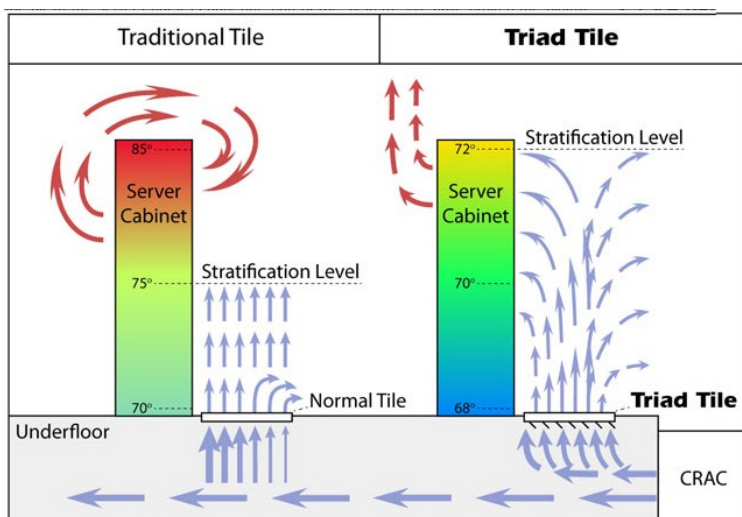
In tests carried out by the Uptime Institute it was found that only 28% of air coming through a tile actually passes through the servers.

The Triad managed airflow grille is different, its specially designed Hi-Plume Stratification fin creates a dispersed pattern of airflow out of the tile. The fin causes the air to “bend” outwardly allowing it to flow into the servers and reach servers at the top of the racks.



Features & Benefits

- Hi-Plume Stratification fin increases cooling capacity and lowers server temperatures by 5 to 15°F.
- 4% Energy cost saving for each degree Fahrenheit raised in CRAC set points.
- Delivers air to full height of the rack.
- 600mm x 600mm heavy duty steel tile.
- 65% Open design delivers 2-3 times more CFM.
- TopSat leveler allows level to be adjusted both vertically and horizontally to allow a flush mount to the existing raised floor.
- Load rating of 680Kg (1,500lbs).
- Dual Lift-n-Lock integrated handles eliminate the need for suction cup lifters.
- Optional dampers and baffles can be fitted.

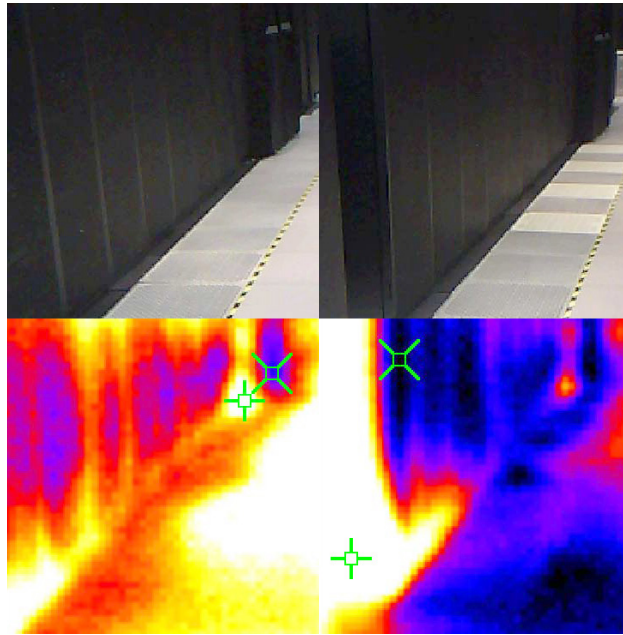


Performance Paramaters:

1. Removes the short cycle that is prevalent in flat bottom tiles. This lowers the temperature of air coming out of the tile by 2°C.
2. Disperses the air into the server. This improves the mass flow rate through the server.
3. Stratifies to 2.1m (7') enabling the uppers servers to be cooled.
4. Stratifying to top of racks prevents hot air wrapping over top of racks.

Before Installation

This thermal image of a row of racks, shows the amount of heat radiating from the servers despite a full row of 56% open floor grilles.

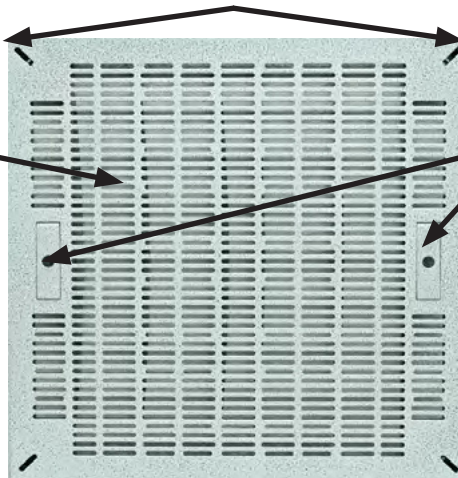


Two Minutes After Installation

In this thermal image just three Triad airflow grilles have been inserted into the row, the results are dramatic. After just two minutes the cooling dispersion from the three Triads creates a 360° dispersion pattern and a balanced stratification level that reaches the top of the rack.

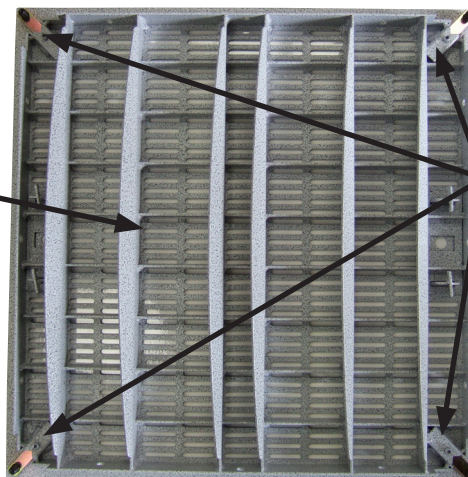
TopSet Leveler Adjusters Level can be adjusted in each corner from above the tile

Slotted Multi-Dispersion Design
Different sized openings improves airflow



Dual Lift-n-Lock Integrated Handles
Eliminates need of tile lifter

Hi-Plume Stratification Fin
Fin creates a 360° dispersion pattern and stratification to top of rack



Corner Tunnel Leveller
Provides vertical and horizontal adjustment to align with existing raised floor

Ver: EDPTMFG1118.1